



SALEM BULK - VALLEY VIEW PROJECT

Wabash Valley Power Alliance, Citizens Electric's wholesale power supplier, is proposing to construct a new, approximately 19-mile 69 kV* transmission line to improve energy reliability for local communities in Southeast Missouri. The new line will connect the Salem Bulk Substation east of Farmington to the Valley View Substation north of Bloomsdale. The proposed in-service date for the project is early 2025.

PROJECT BENEFITS



Improve energy reliability for local homes and businesses



Support area economic growth



Maintenance can be performed without disrupting power



Improved transmission capacity

SCHEDULE

2021 & 2022

- o Engineering & permitting
- o Field surveys
- o Real estate acquisitions

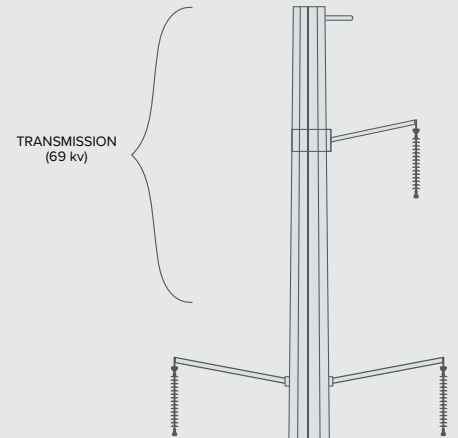
2023 & 2024

- o Construction

EARLY 2025

- o Project in-service

*1kV = 1,000 volts



Typical 69 kV Steel Monopole Structures

Height:

65 – 80 ft

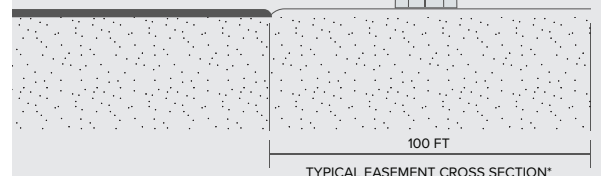
Span:

600 – 800 ft

Structures/mile:

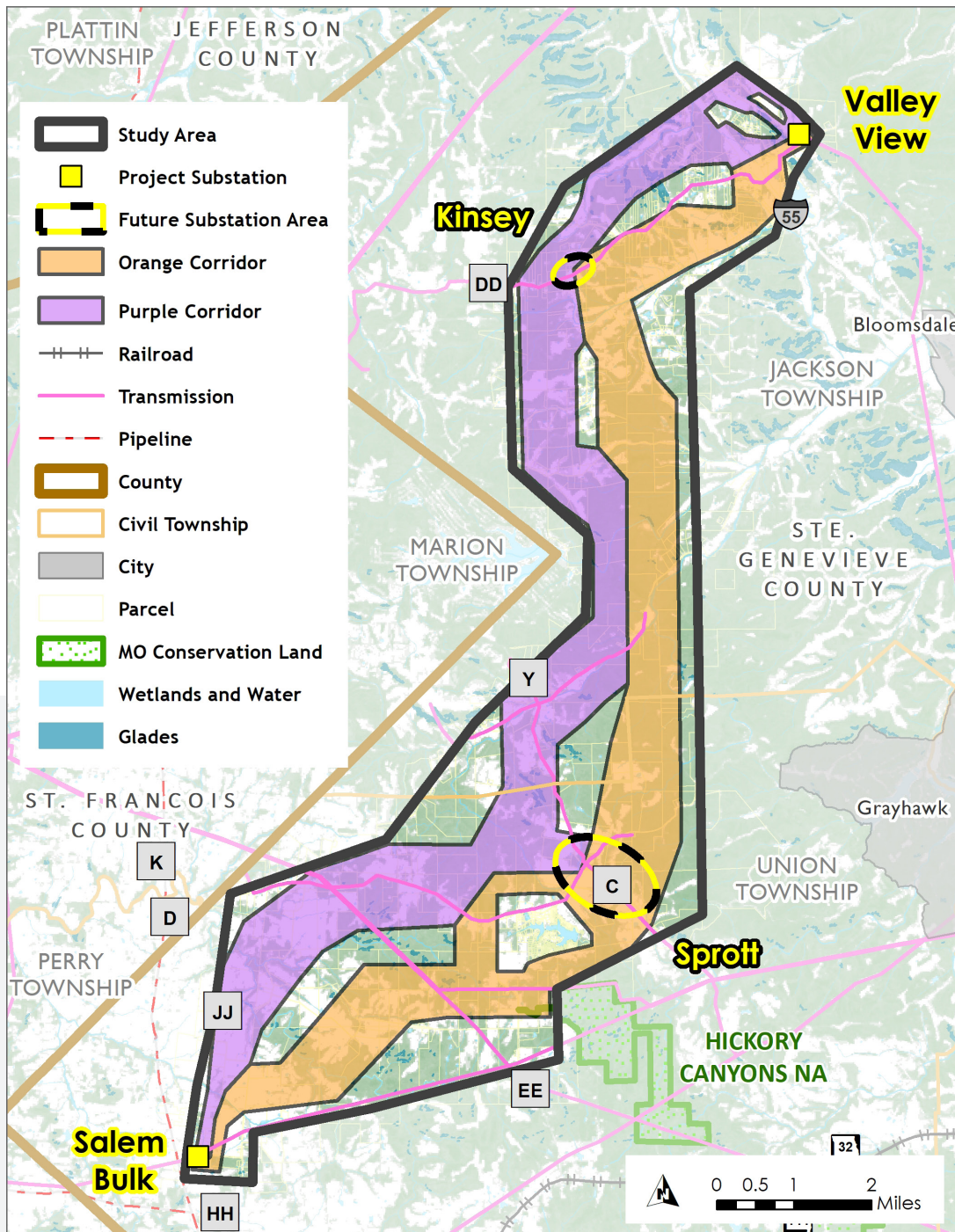
6 – 10

EDGE OF EASEMENT



*Vegetation is removed

STUDY CORRIDORS



**WE'RE
LOOKING FOR
YOUR INPUT!**

Review this list of Opportunities and Constraints to understand the types of additional information and comments we're looking to gather. We will review and consider all comments gathered during the routing process.

OPPORTUNITIES

- Existing easements
- Field lines
- Fence lines
- Property lines

CONSTRAINTS

- Agricultural plots, vineyards and apiaries
- Forested areas
- Slope and karst areas
- Mine/quarries
- Century Farms
- Nature Preserves or Easements
- Floodplain, waterways, and wetlands
- Cultural and historical resources
- Threatened and Endangered Species
- Planned development
- Hospitals, schools, daycares
- Religious facilities and cemeteries
- Residential homes and densely populated areas
- Recreational areas, golf courses and parks
- Wells

For more information about the project, please visit: wvpa.com/salembulk or call (888) 997-0766