



TIPMONT - BROOKSTON PROJECT

Wabash Valley Power Alliance, Carroll White REMC and Tipmont REMC’s wholesale power supplier, is proposing to construct a new, approximately 5-mile 69 kV transmission line to improve energy reliability for local communities in Northwest Indiana. The new line will connect two substations in Tippecanoe and White Counties.

PROJECT BENEFITS



Improve energy reliability for local homes and businesses



Support area economic growth



Improved transmission capacity



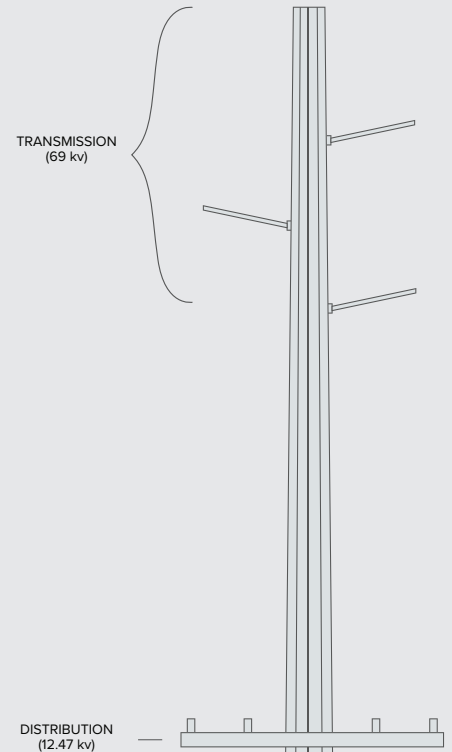
Maintenance can be performed without disrupting power



New annual tax revenue to support local communities

WE WANT TO TALK TO YOU!

Please call (888) 997-0766 to schedule a time to talk to a project representative. We are available for appointments the week of February 8th and February 15th. You can also send an email to tipmontbrookston@wvpa.com.

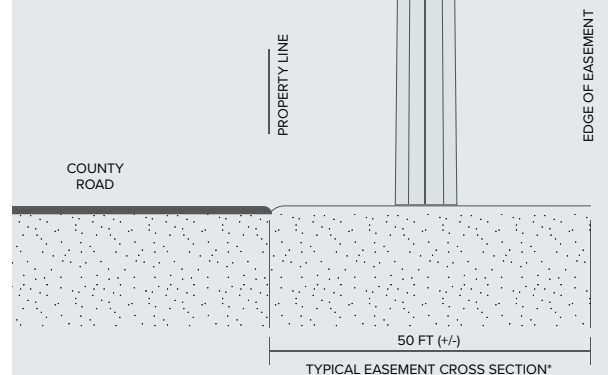


Typical 69 kV Steel Monopole Structures

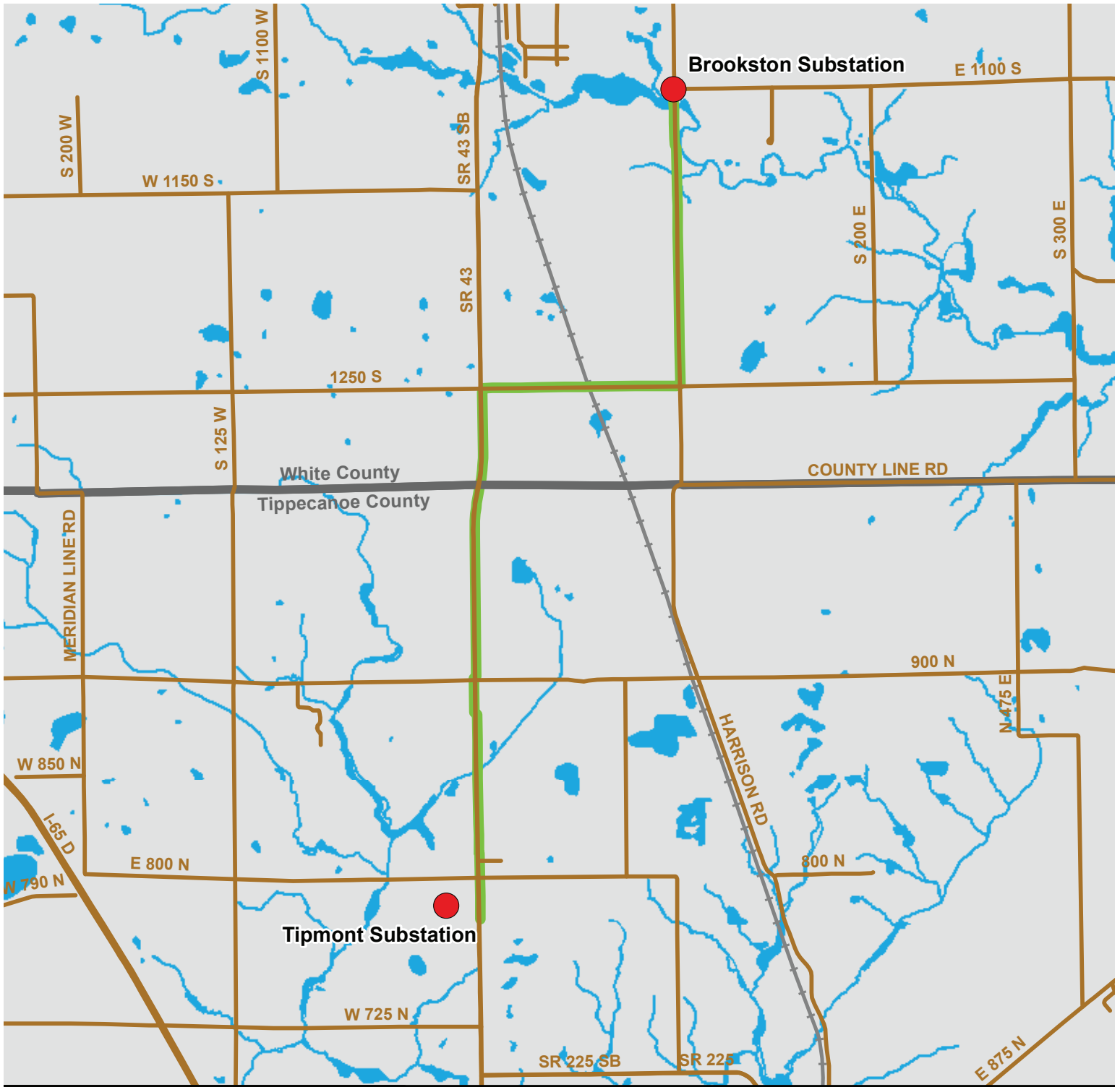
Height: 55 – 75 ft

Span: 200 – 300 ft

Structures/mile: 20 – 25



*Vegetation is removed



General Legend

- Proposed Substation
- Proposed Route
- Road
- County Lines
- +— Railroad
- Wetland and Water

Tipmont to Brookston 69kV

