



ENTERPRISE SOUTH - ANSON NORTH PROJECT

Wabash Valley Power Alliance, Boone REMC's wholesale power supplier, is proposing to construct a new, approximately 11-mile 69 kV transmission line and state-of-the-art substations to improve energy reliability for local communities in Central Indiana. The new line will connect two substations in Boone County. The proposed in-service date for the project is February 2022.

PROJECT BENEFITS



Improve energy reliability for local homes and businesses



Support area economic growth



Improved transmission capacity



Maintenance can be performed without disrupting power



New annual tax revenue to support communities in Boone County

SCHEDULE

2020

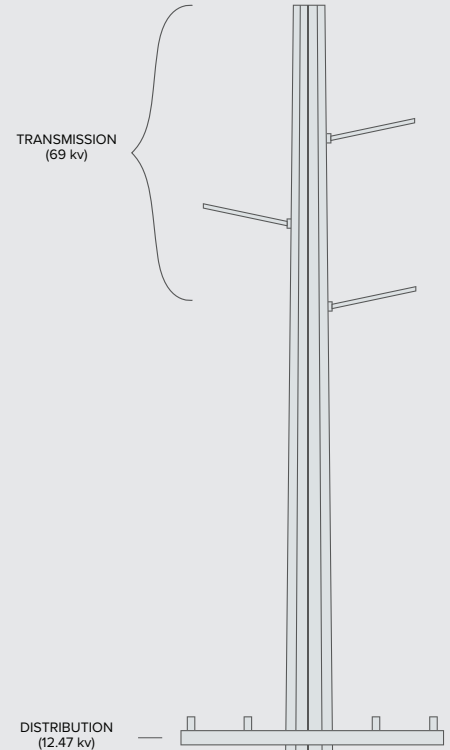
- o Engineering & Permitting
- o Field surveys
- o Real estate acquisitions

2021

- o Field surveys
- o Real estate acquisitions
- o Construction begins

2022

- o Complete construction
- o Project in-service (February)

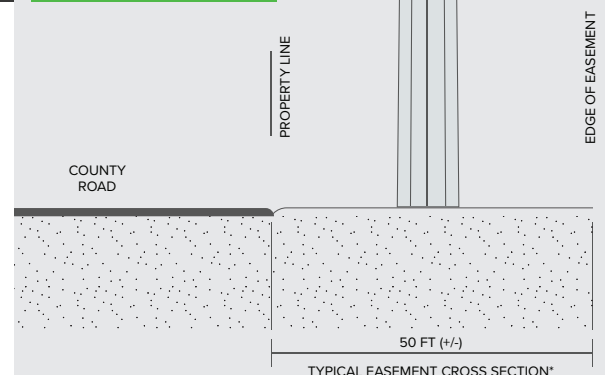


Typical 69 kV Steel Monopole Structures

Height:
70 – 90 ft

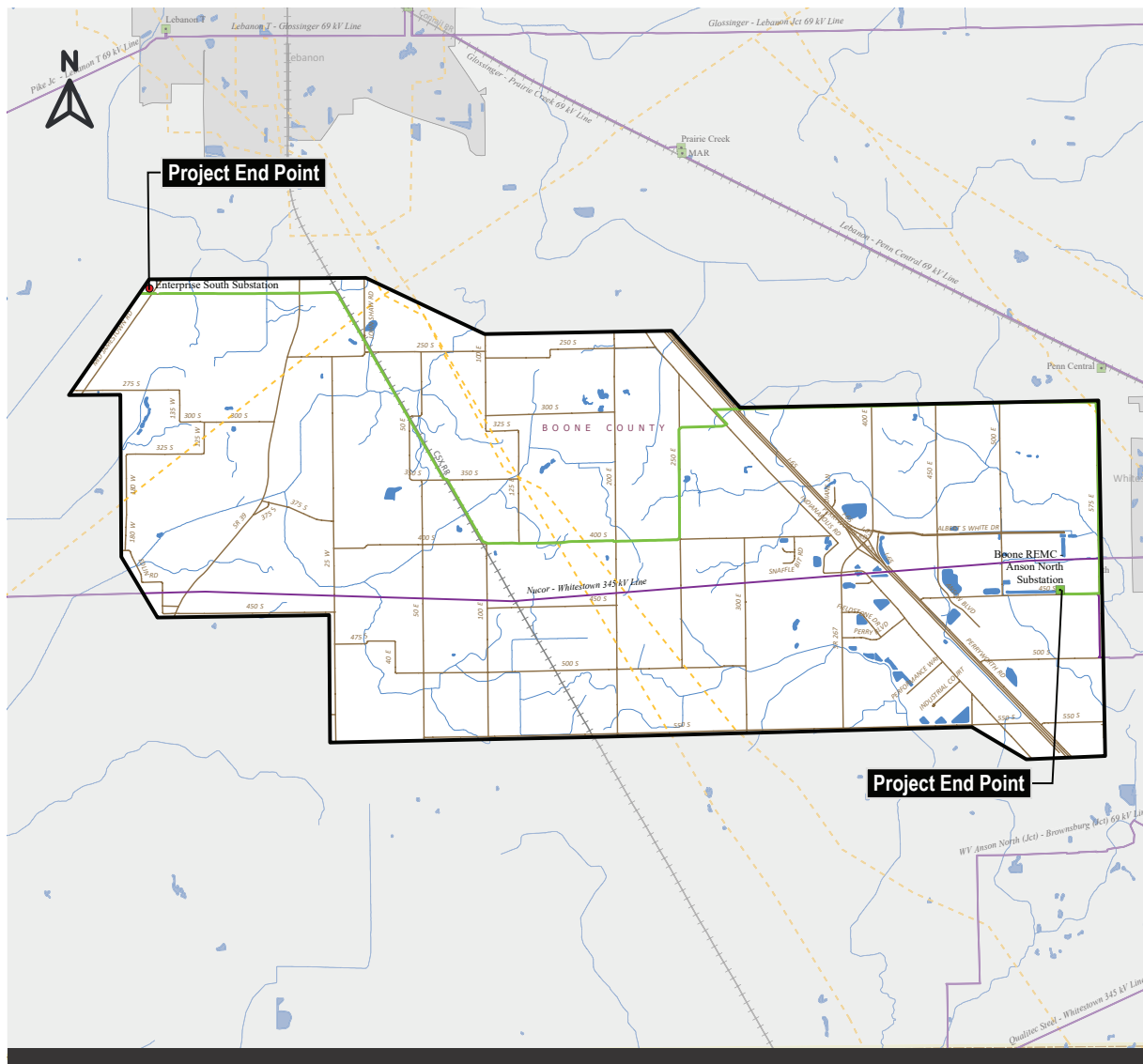
Span:
200 – 300 ft

Structures/mile:
17 – 24



*Vegetation is removed

STUDY AREA



For more information about the project, please visit: wvpa.com/enterprisesouth or call (888) 997-0766