



# ENTERPRISE SOUTH - ANSON NORTH PROJECT

Wabash Valley Power Alliance, Boone REMC's wholesale power supplier, is proposing to construct a new, approximately 11-mile 69 kV transmission line and state-of-the-art substations to improve energy reliability for local communities in Central Indiana. The new line will connect two substations in Boone County. The proposed in-service date for the project is February 2022.

## PROJECT BENEFITS



Improve energy reliability for local homes and businesses



Support area economic growth



Improved transmission capacity



Maintenance can be performed without disrupting power



New annual tax revenue to support communities in Boone County

## SCHEDULE

### 2020

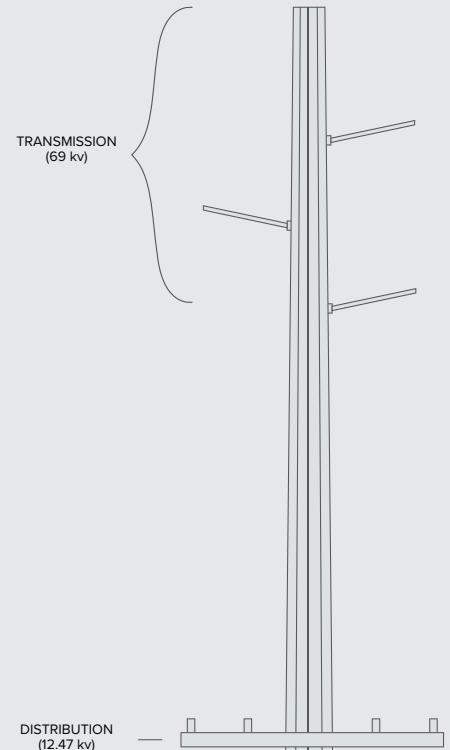
- o Engineering & Permitting
- o Field surveys
- o Real estate acquisitions

### 2021

- o Field surveys
- o Real estate acquisitions
- o Construction begins

### 2022

- o Complete construction
- o Project in-service (February)

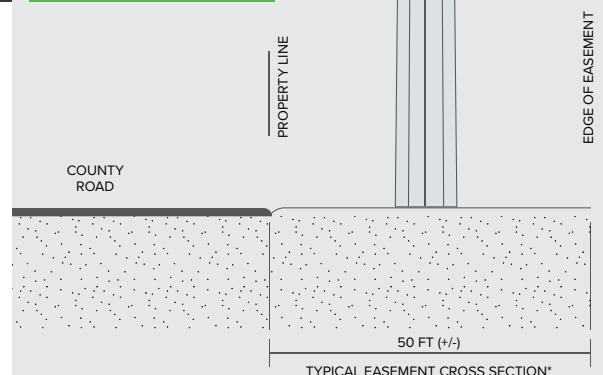


### Typical 69 kV Steel Monopole Structures

Height:  
70 – 90 ft

Span:  
200 – 300 ft

Structures/mile:  
17 – 24



\*Vegetation is removed

The map displays Boone County, Missouri, with a proposed transmission line project highlighted in green. The project starts at the Enterprise South Substation and ends at the Anson North Substation. The map includes various roads, including Highway 60, and other utility lines. A north arrow is located in the top left corner. The map also shows the Boone REMC and the Anson North Substation. The project line is highlighted in green, connecting the two substations. The map also shows various roads, including Highway 60, and other utility lines. A north arrow is located in the top left corner.

- 
- The map displays Boone County, Missouri, with a proposed transmission line project highlighted in green. The project starts at the Enterprise South Substation and ends at the Anson North Substation. The map includes various roads, including Highway 60, and other utility lines. A north arrow is located in the top left corner. The map also shows the Boone REMC and the Anson North Substation. The project line is highlighted in green, connecting the two substations. The map also shows various roads, including Highway 60, and other utility lines. A north arrow is located in the top left corner.

For more information about the project, please visit: [wvpa.com/enterprisesouth](http://wvpa.com/enterprisesouth)